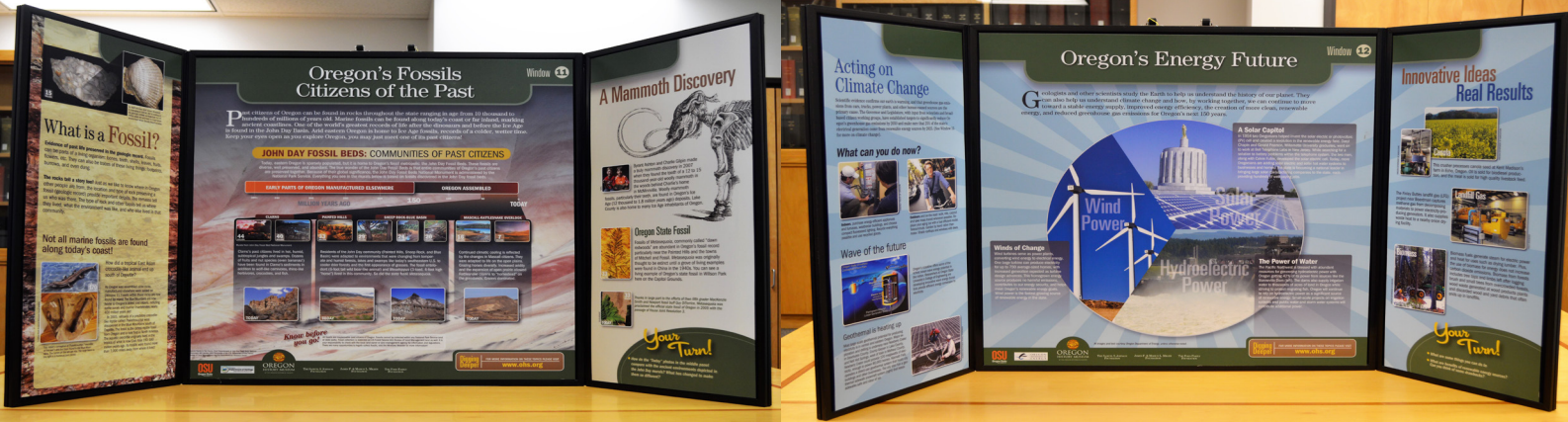


Oregon: 150 Years of Statehood, 150 Million Years in the Making

Traveling Exhibition



THE OREGON
HISTORICAL
SOCIETY
FOUNDED 1898



In 2009, Oregon celebrated 150 years as a state. Oregon's landscape has a much longer history — geological processes have been building the state's landscape for more than 150 million years!

The 16 panels in this traveling exhibit can be displayed as a table top or a wall-mounted display. The panels illustrate how geology crafted Oregon's landscape and natural resources and continues to shape the land and lives of its citizens.

Rental fees and shipping costs are waived through 2022 thanks to a generous sponsorship by the Samuel S. Johnson Foundation!

The exhibit was developed by OHS, in collaboration with OSU Department of Geosciences, Oregon Department of Geology and Mineral Industries, Oregon Paleo Lands Institute, OSU Hatfield Marine Science Center, Portland State University, and the Oregon Department of Energy.

Book Today!

Rental Fee: \$250 per month (plus shipping).

Rental fee and shipping waived through 2022!

Insurance: Coverage of \$20,560 is required.

Shipping: Exhibition may be picked up and dropped off at the Oregon Historical Society or shipped by courier.

Size: Each panel is 32" high X 64" long X 1" deep.

Weight: The exhibit includes eight cases that weigh 55 lbs. each.

More Info: ohs.org/travelingexhibits

Interested in hosting Oregon 150?

Contact: Tara Cole, Museum Services Coordinator
tara.cole@ohs.org • 503.306.5223

Oregon Historical Society
1200 SW Park Ave., Portland, OR 97205
503.222.1741 • www.ohs.org